



## Dragon Scale Shawl

No. 1026-203-3364

**Skill level:** Experienced

**Measurements:** approx. 220 cm x 50 cm

**Crochet hook:** 3,5 mm

**Yarn:** Universe

**Cassiopeia (#19) - 3 skeins**

Buy your yarn here:

<http://shop.hobbii.com/dragon-scale-shawl>

**Abbreviations:**

**ch** - chain

**st** - stitch

**sc** - single crochet

**dc** - double crochet

**trb** - treble crochet

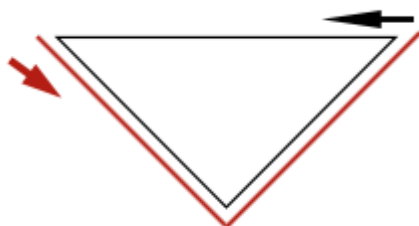
**fpdc** - front post double crochet

**dc4tog** - work 4 dc together

**dc2tog** - work 2 dc together

**ch-space** - chain space

**Turn your shawl after each row!**



## Part 1 (Increase and middle)

Start: Make a Magic Ring

**Row 1:** ch 3 (counts at the beginning of a row as 1 dc), 4 dc into the ring

**Row 2:** ch 3, dc in next 3 stitches, 3 trb in last stitch

**Row 3:** ch 3, dc in first stitch, dc in next 6 stitches

**Row 4:** ch 3, dc in next stitch, ch 1, skip 2, 4 dc in next stitch, ch 1, skip 2, 3 trb in last stitch

**Row 5:** ch 3, dc in first stitch, ch 1, skip 1, dc in next stitch, ch 2, skip 1 ch, dc4tog, ch 2, skip 1 ch, dc in next 2 stitches

**Row 6:** ch 3, 2 dc in next stitch, ch 1, skip 2 ch, fpdc around the dc4tog, ch 1, skip 2 ch, 4 dc in next stitch, ch 1, skip 1 ch and 1 dc, 3 trb in next stitch

**Row 7:** ch 3, dc in first stitch, ch 1, skip 1, dc in next stitch, ch 2, skip 1 ch, dc4tog, ch 2, skip 1 ch, dc in next stitch, ch 2, skip 1 ch, dc2tog, dc in next stitch

**Row 8:** ch 3, dc in next stitch, ch 1, skip 2 ch, 4 dc in next stitch, ch 1, skip 2 ch, fpdc around the dc4tog, ch 1, skip 2 ch, 4 dc in next stitch, ch 1, skip 1 ch and 1 dc, 3 trb next stitch

**Row 9:** ch 3, dc in first stitch, ch 1, skip 1, dc in next stitch, ch 2, skip 1 ch, dc4tog, ch 2, skip 1 ch, dc in next stitch, ch 2, skip 1 ch, dc4tog, ch 2, skip 1 ch, dc in next 2 stitches

**Row 10:** ch 3, 2 dc in next stitch,  
 \*ch 1, skip 2 ch, fpdc around the dc4tog, ch 1, skip 2 ch, 4 dc in next stitch\* \*-\* repeat until 3 stitches before the end of the row,  
 ch 1, skip 1 ch and 1 dc, 3 trb in next stitch

**Row 11:** ch 3, dc in first stitch, ch 1, skip 1, dc in next stitch,  
 \*ch 2, skip 1 ch, dc4tog, ch 2, skip 1 ch, dc in next stitch\* \*-\* repeat until 4 stitches before the end of the row,

ch 2, skip 1 ch, dc2tog, dc in next stitch

**Row 12:** ch 3, dc in next stitch, ch 1, skip 2 ch, 4 dc in next stitch,  
\*ch 1, skip 2 ch, fpdc around the dc4tog, ch 1, skip 2 ch, 4 dc in next stitch\* \*-\* repeat until 3  
stitches before the end of the row,  
ch 1, skip 1 ch and 1 dc, 3 trb in next stitch

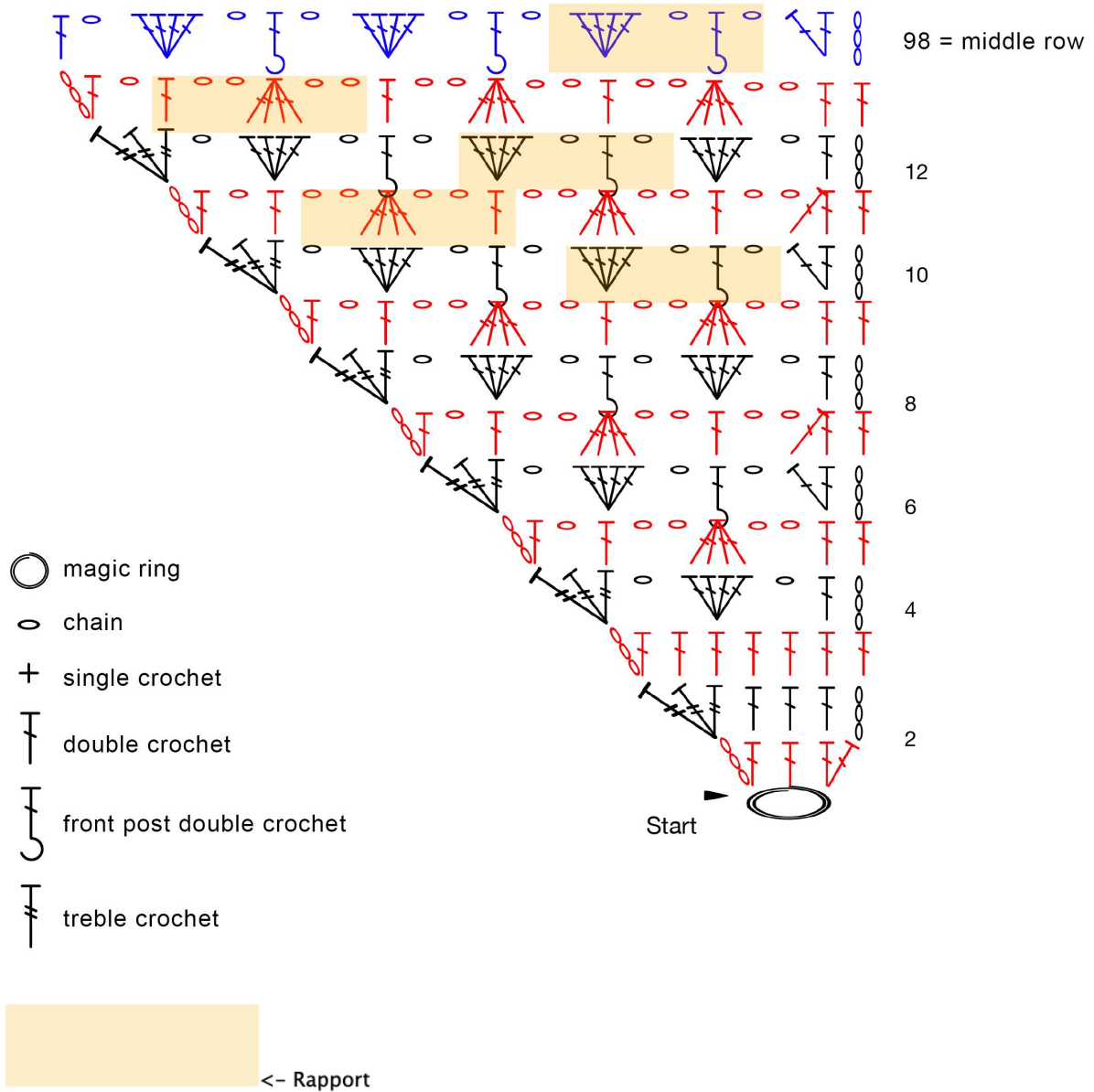
**Row 13:** ch 3, dc in first stitch, ch 1, skip 1,  
\*dc in next stitch, ch 2, skip 1 ch, dc4tog, ch 2, skip 1 ch\* \*-\* repeat until 2 stitches before the  
end of the row,  
dc in next 2 stitches

**Now repeat rows 10 to 13 until you have 97 rows, or until about 40% of the total  
amount of yarn has been used**

**Row 98 = Middle row of the shawl**

ch 3, 2 dc in next stitch,  
\*ch 1, skip 2 ch, fpdc around the dc4tog, ch 1, skip 2 ch, 4 dc in next stitch\* \*-\* repeat until 3  
stitches before the end of the row,  
ch 1, skip 1 ch and dc, dc in next stitch

## Crochet chart part 1 (increase and middle)



## Part 2 (decrease)

**Row 99:** ch 2, dc into the ch-space, ch 1,  
\*dc4tog, ch 2, skip 1 ch, dc in next stitch, ch 2, skip 1 ch\* \*-\* repeat until 3 stitches before  
the end of the row,  
dc2tog, dc in next stitch

**Row 100:** ch 3, dc in next stitch, ch 1, skip 2 ch, 4 dc in next stitch, ch 1, skip 2 ch,  
\*fpdc around the dc4tog, ch 1, skip 2 ch, 4 dc in next stitch, ch 1, skip 2 ch\* \*-\* repeat until 3  
stitches before the end of the row,  
trb3tog (the first trb starts in the stitch of the dc4tog, the second in the following ch-space and  
the last in the following dc)

**Row 101:** ch 2, dc into the ch-space, ch 1, dc4tog, ch 2, skip 1 ch,  
\*dc in next stitch, ch 2, skip 1 ch, dc4tog, ch 2, skip 1 ch\* \*-\* repeat until 2 stitches before the  
end of the row,  
dc in next 2 stitches

**Row 102:** ch 3, 2 dc in next stitch, ch 1, skip 2 ch,  
\*fpdc around the dc4tog, ch 1, skip 2 ch, 4 dc in next stitch, ch 1, skip 2 ch\* \*-\* repeat until 3  
stitches before the end of the row,  
trb3tog (the first trb starts in the stitch of the dc4tog, the second in the following ch-space and  
the last in the following dc)

**Repeat the rows 99 to 102 until you have 12 stitches left**

**Fifth last row:** ch 2, dc into the ch-space, ch 1, dc4tog, ch 2, skip 1 ch, 1 dc in next stitch, ch  
2, skip 1 ch, dc2tog, dc in next stitch

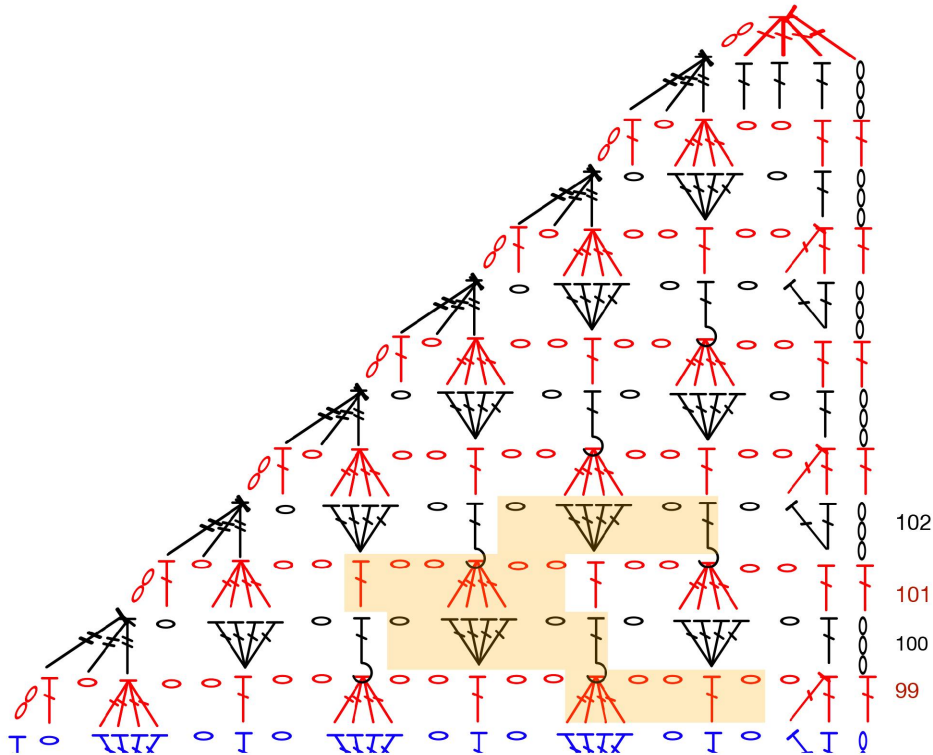
**Fourth last row:** ch 3, dc in next stitch, ch 1, skip 2 ch, 4 dc in next stitch, ch 1, skip 2 ch,  
trb3tog (the first trb starts in the stitch of the dc4tog, the second in the following ch-space and  
the last in the following dc)

**Third last row:** ch 2, dc into the ch-space, ch 1, dc4tog, ch 2, skip 1 ch, dc in next 2 stitches

**Second last row:** ch 3, dc in next stitch, 2 dc into the ch-space, trb3tog (the first trb starts in  
the stitch of the dc4tog, the second in the following ch-space and the last in the following dc)

**Last row:** ch 2, dc4tog

## Crochet chart part 2 (decreases)



## Border

The edge is crocheted around the bottom of the shawl.  
Join the yarn at the end of the shawl (the dc4tog).

**Row 1:** ch 3, 3 dc and 1 sc in the top of the dc4tog, ch 1,  
(3 dc, ch 2, 3 dc) into the 2ch-space from the last row of the shawl  
ch 1, sc in the lengthways lying trb from the second last row of the shawl,  
ch 1  
(3 dc, ch 2, 3 dc) into the 2ch-space from the third last row of the shawl,  
*\*ch 1, sc in the lengthways lying trb from the next row of the shawl, ch 1, (3 dc, ch 2, 3 dc)  
into the 2ch-space from the next row of the shawl\* \*-\** repeat until the middle,  
ch 1, sc in the lengthways lying dc from the middle row of the shawl,  
ch 1,  
(3 dc, ch 2, 3 dc) into the 3ch-space from the next row of the shawl,  
*\*ch 1, sc in the lengthways lying trb from the next row of the shawl, ch 1, (3 dc, ch 2, 3 dc)  
into the 3ch-space from the next row of the shawl\* \*-\** repeat until the beginning of the shawl,  
ch 1, sc and 4 dc into the ring

**Row 2:** ch 3, 3 dc in first stitch, ch 3, skip 3 dc, sc in sc, ch 3, skip 1 ch and 1 dc,

\*(3 dc, ch 2, 3 dc) into the ch-space, ch 3, skip 3dc and 1 ch, sc in sc, ch 3, skip 1 ch and 3 dc\*

\*-\* repeat until the end of the row

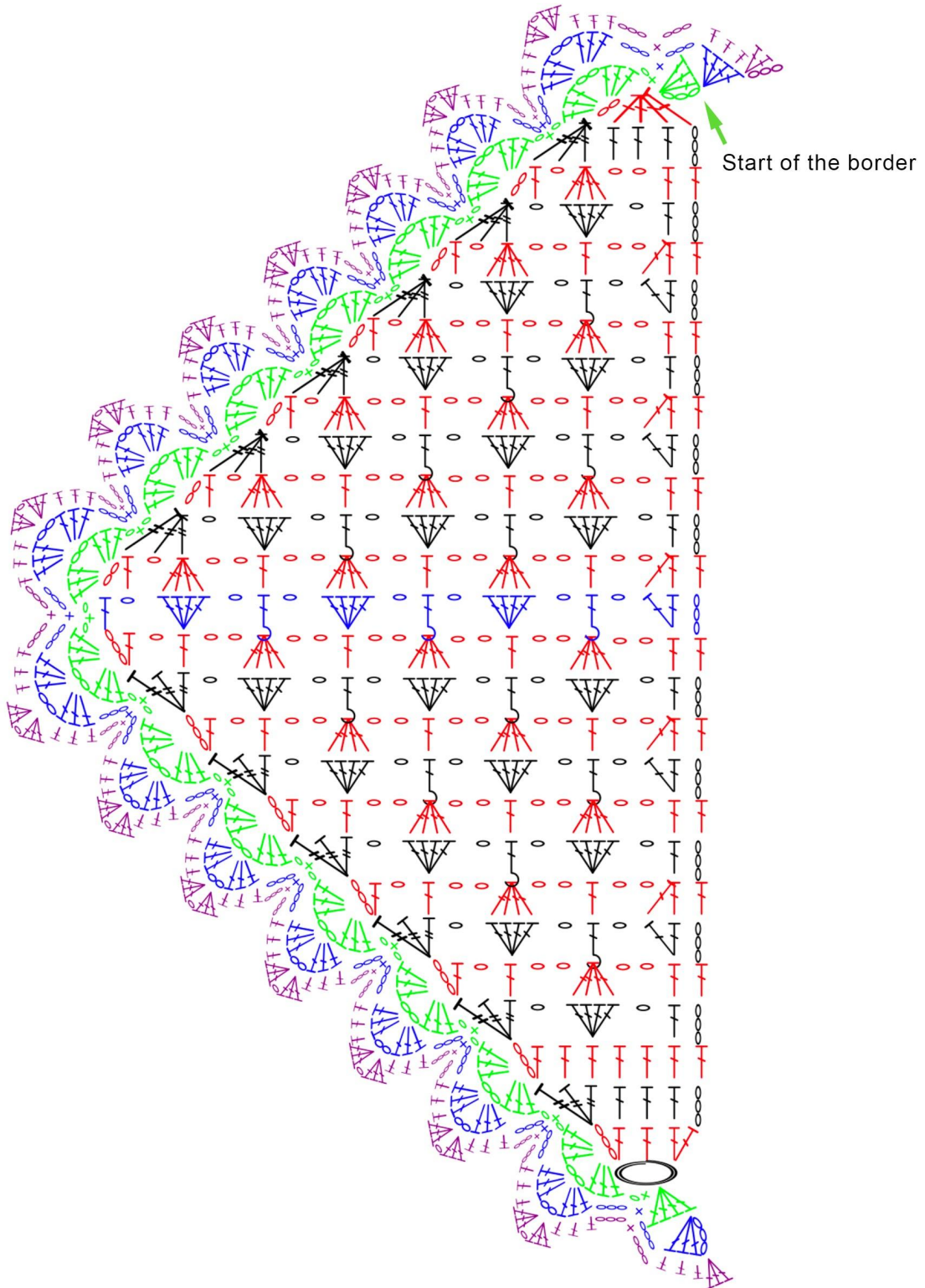
4 dc in last stitch

**Row 3:** ch 3, 2 dc in first stitch, dc in next 3 stitches, ch 3, skip 3 ch, sc in sc, ch 3, skip 3 ch, dc in next 3 stitches,

\*(3 dc, ch 1, 3 dc) into the ch-space, dc in next 3 stitches, ch 3, skip 1 ch, sc in sc, ch 3, skip 3 ch, dc in next 3 stitches\* \*-\* repeat until the end of the row,

3 dc in last stitch

Block the shawl if needed and weave in the ends.





**Enjoy!**  
Morben Design

